



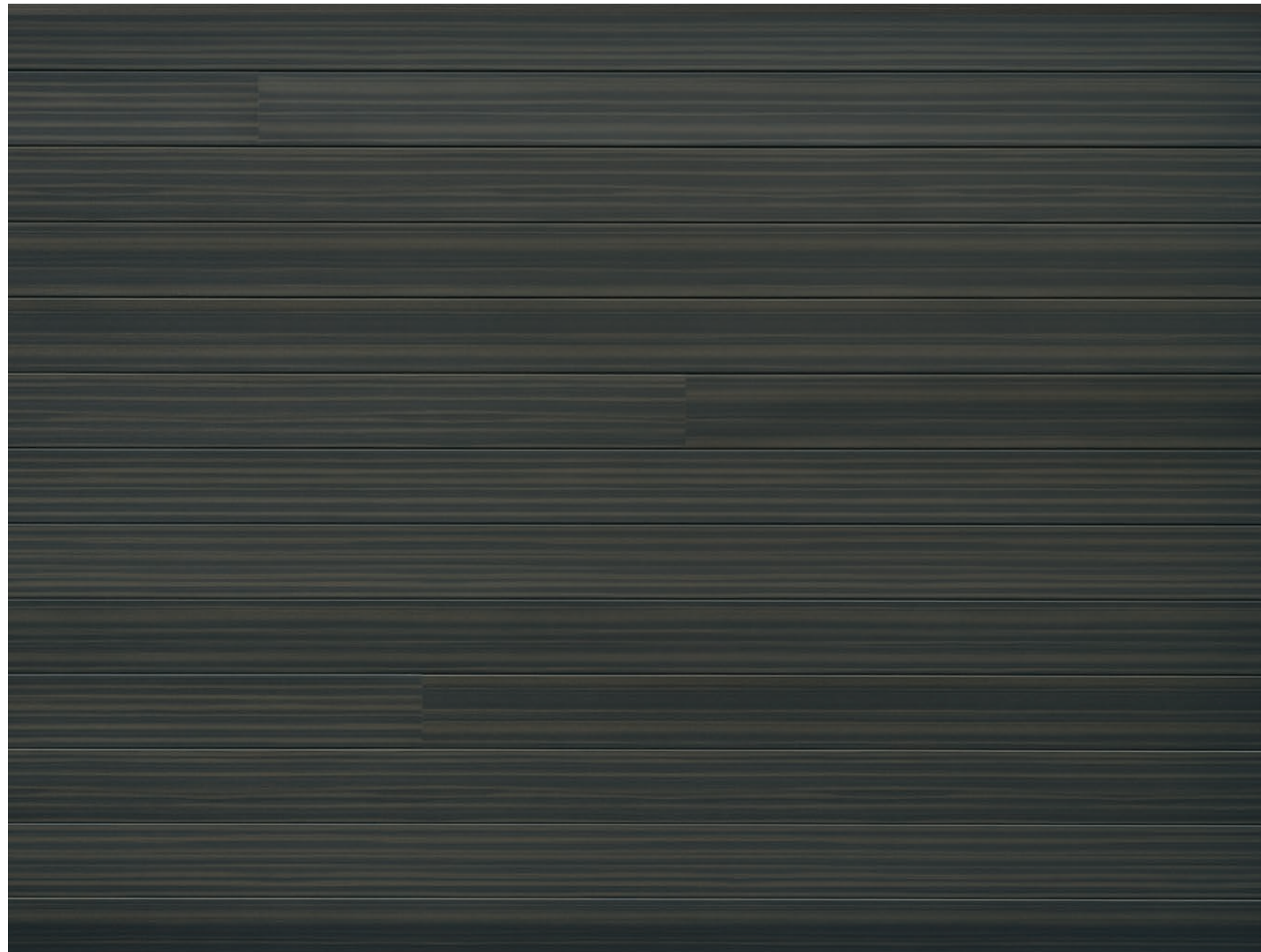




Vesta Plank in Ironstone and as Porch Ceiling in Gilded Grain | Fascia and Trim in Ironstone







Vesta Plank in Dark Espresso and White





Vesta Plank in Autumn Thistle | TruVent® soffit, drip edge, rainware and trim in Black







Vesta Plank in White and Tourmaline | TruCedar® 6" Board & Batten in White | Vesta Plank as porch ceiling in Sand Dollar | Fascia, soffit, and rainware in Black



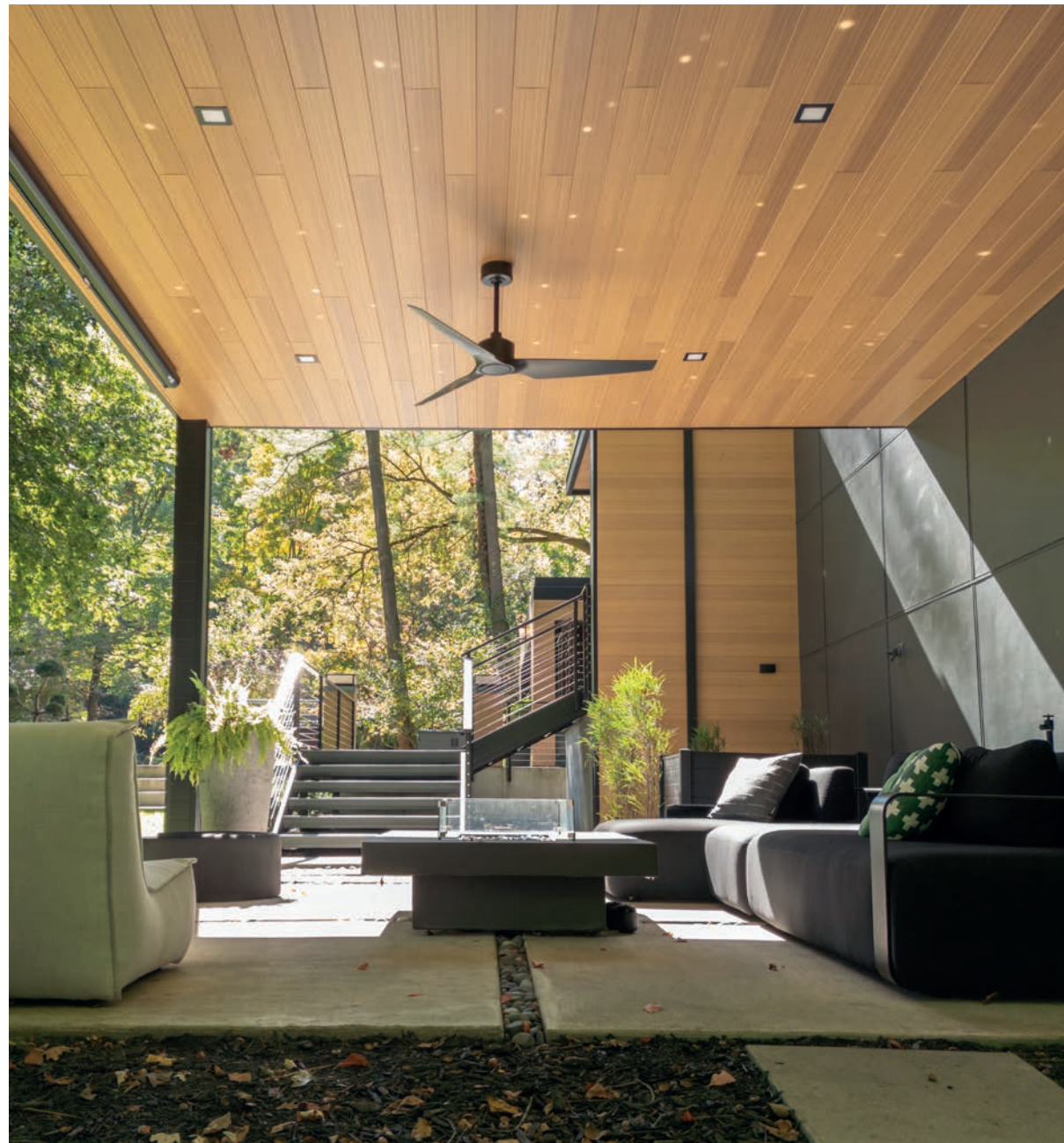


Vesta Plank Autumn Thistle | Vesta Plank as porch ceiling in Autumn Thistle | Fascia, drip edge and trim in Black





Vesta Plank Siding and Overhang in Gilded Grain | Fascia, drip edge and trim in Black



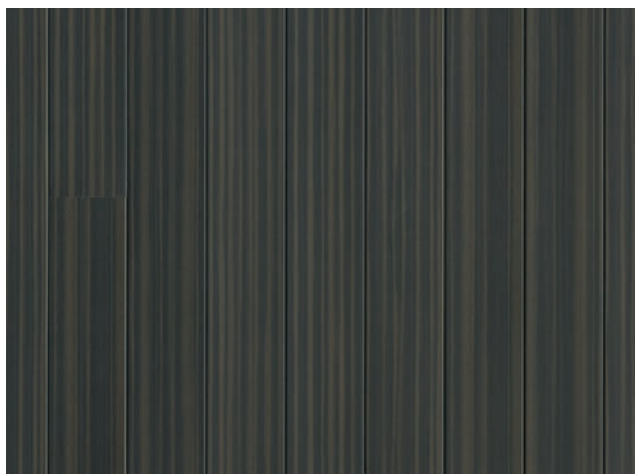


















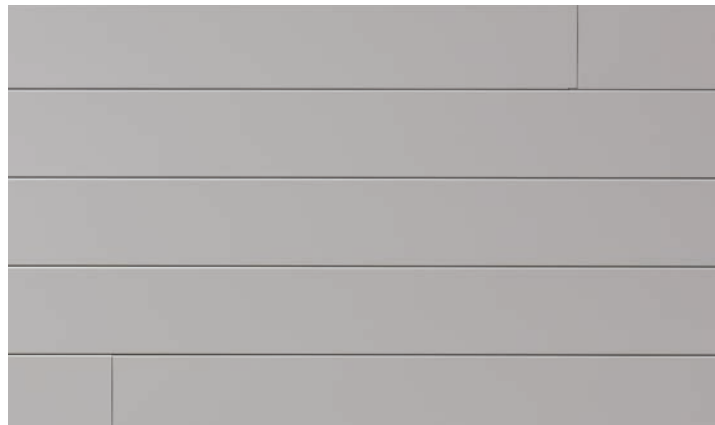






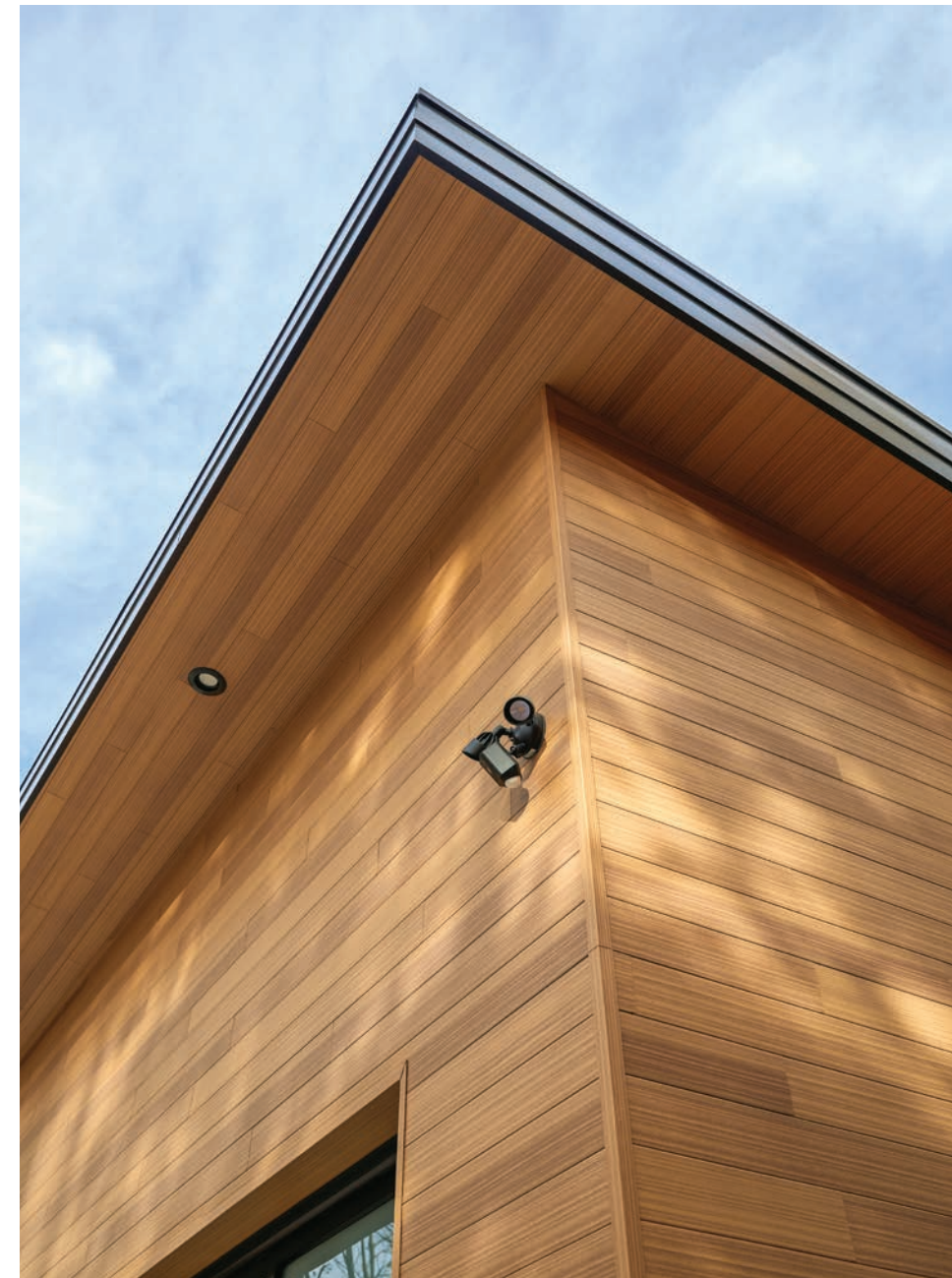
Vesta Plank in Aged Walnut





Vesta Plank in Gilded Grain and Silver Lining | Vesta Plank as soffit in Gilded Grain | Fascia, drip edge and trim in Black





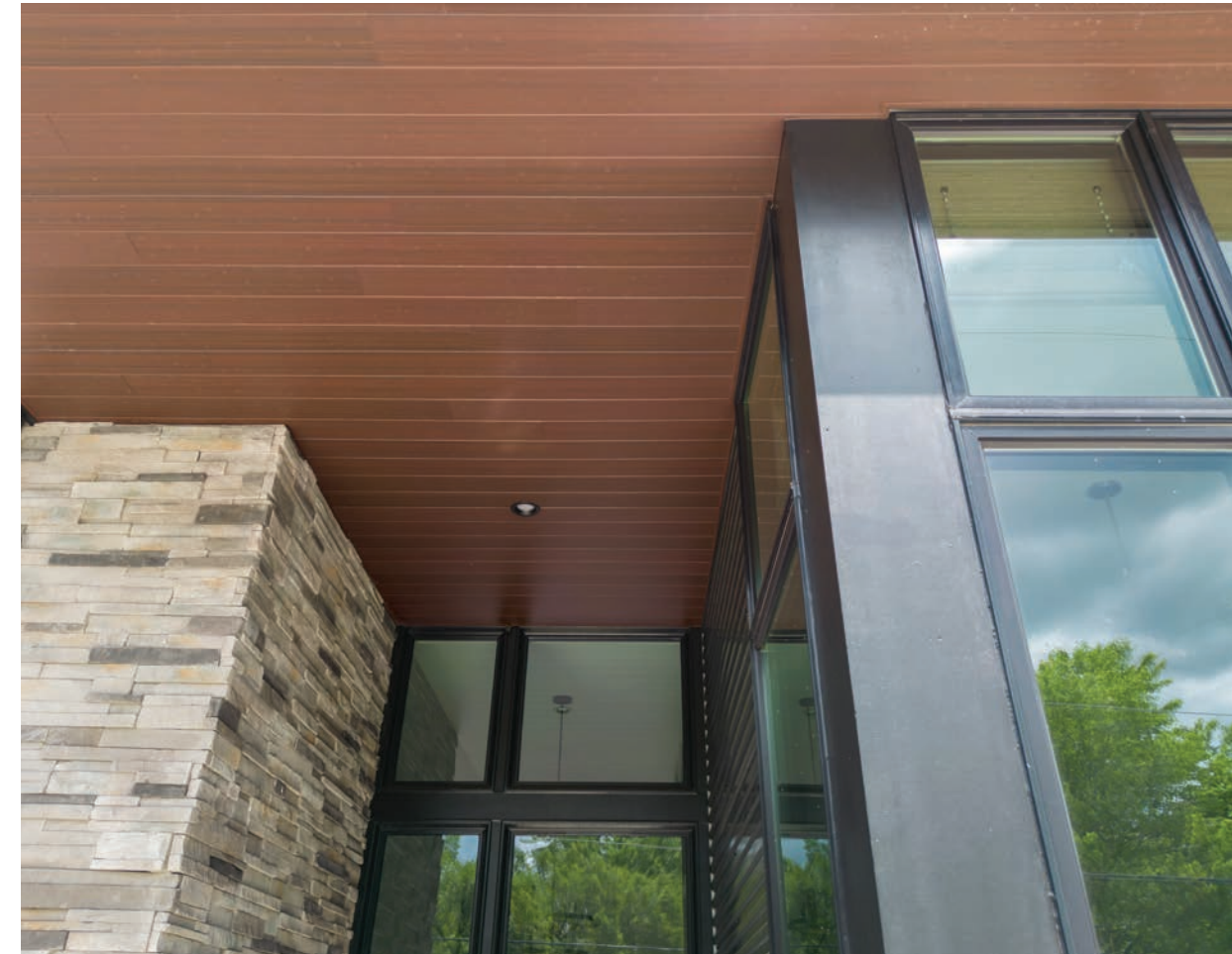




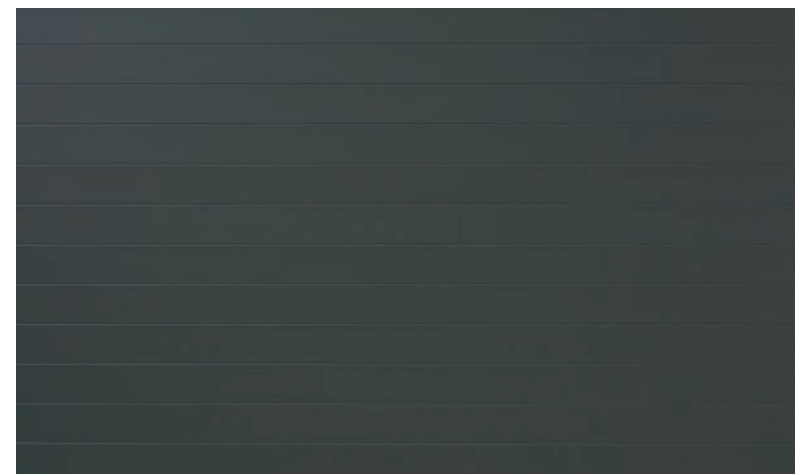
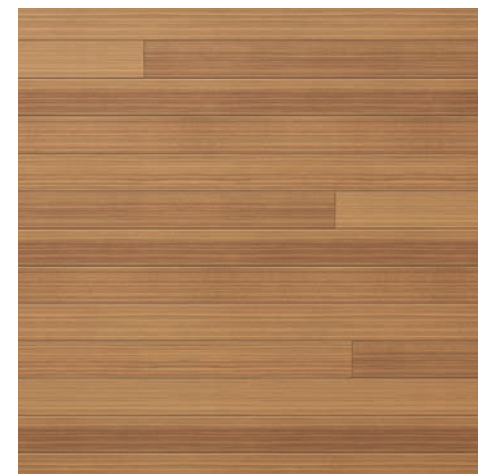
Vesta Plank Siding and Overhang in Gilded Grain



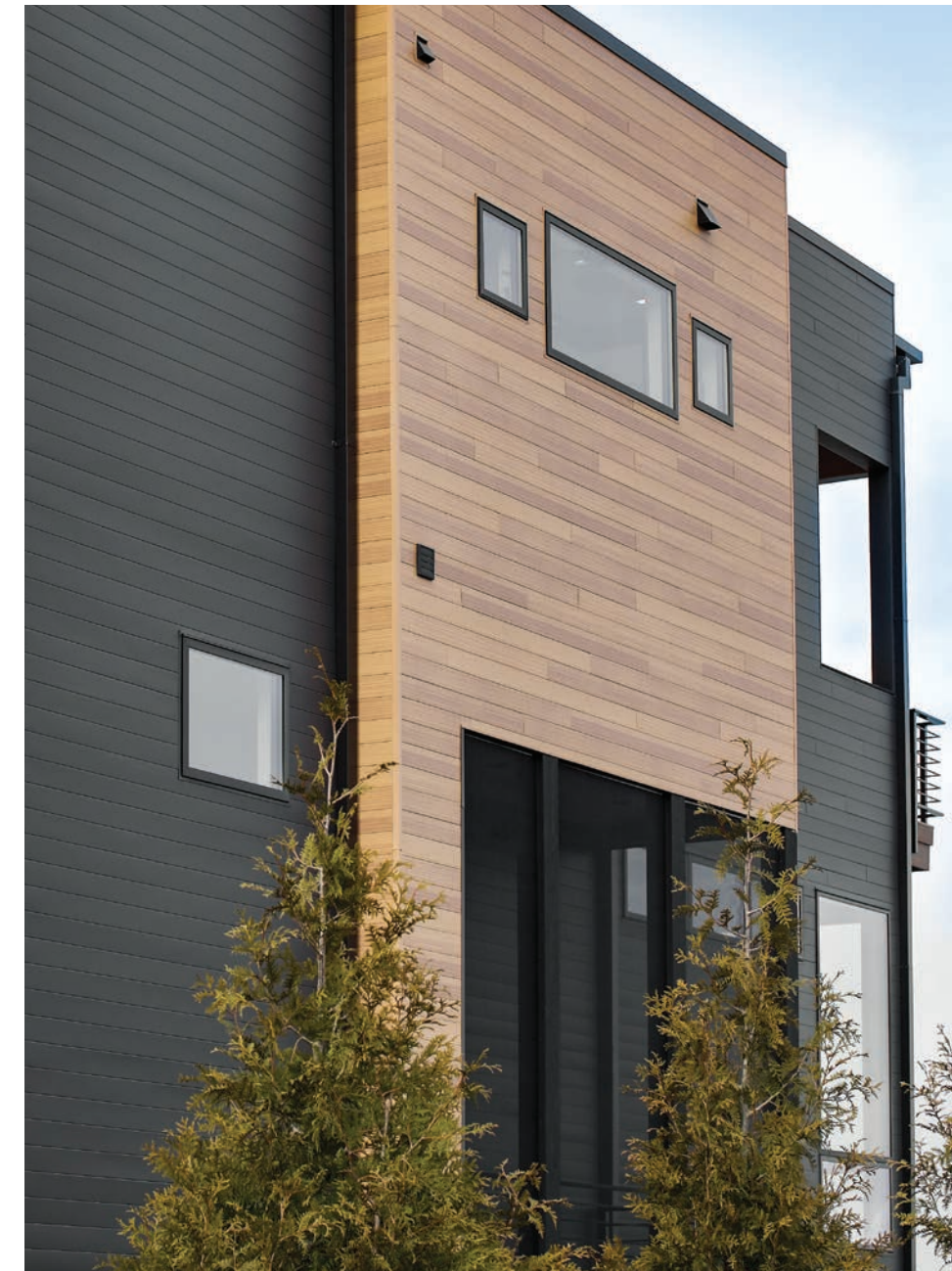
Vesta Plank in Autumn Thistle



















Vesta Plank in Eggshell and Autumn Thistle | Vesta Plank Overhang in Autumn Thistle | Fascia, drip edge and trim in Black







Vesta Plank in Sand Dollar and White | TruVent soffit, fascia, and trim in Black







Vesta Plank Siding and Soffit in Ironstone and Driftwood



Vesta Plank in Gilded Grain and TruCedar 6" Board & Batten in White





Vesta Plank in Gilded Grain and TruCedar 10" Board & Batten in Ironstone





Left to Right Top Row: Vesta Plank in Gilded Grain and Sand Dollar | Vesta Plank in Gilded Grain | Vesta Plank in Autumn Thistle, Silver Lining, Sea Glass and Eggshell  
 Left to Right Middle Row: Vesta Plank in Gilded Grain and Ironstone | Vesta Plank in Gilded Grain  
 Left to Right Bottom Row: Vesta Plank in Sand Dollar and Ironstone

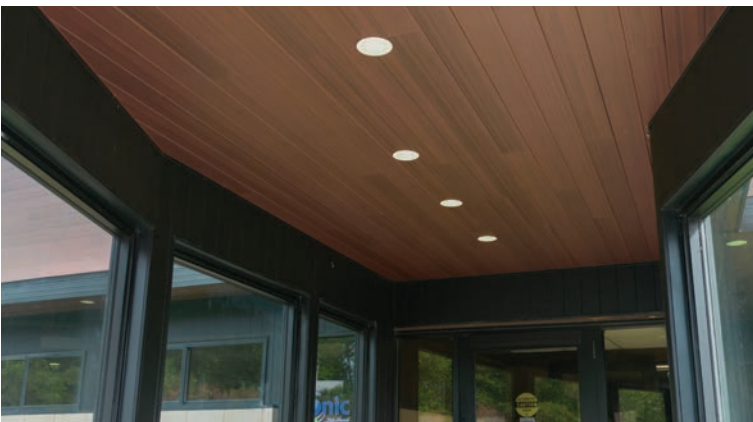
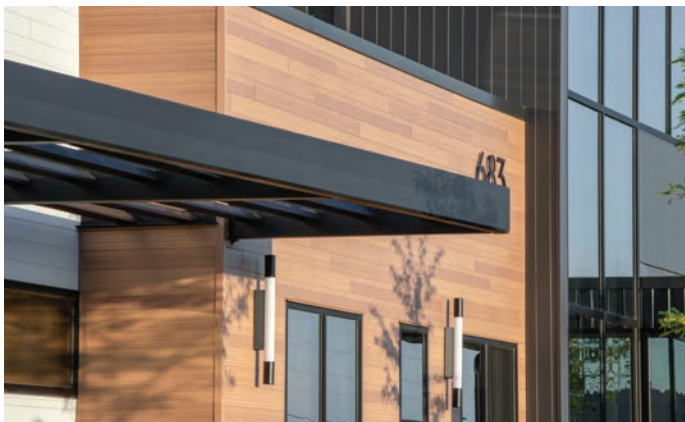


Vesta Plank in Driftwood





Vesta Plank in Gilded Grain

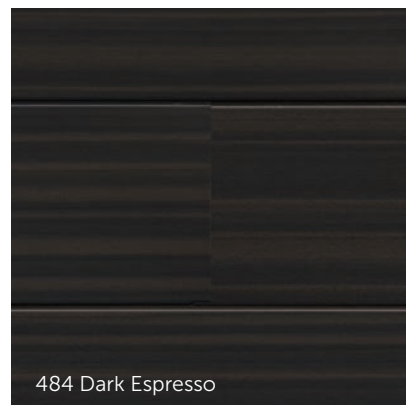


Left to Right Top Row: Vesta Plank in Sand Dollar | Vesta Plank in Gilded Grain | Vesta Plank in Gilded Grain  
 Left to Right Middle Row: Vesta Plank in Autumn Thistle and Ironstone | Vesta Plank in Gilded Grain and Ironstone  
 Left to Right Bottom Row: Vesta Plank in Gilded Grain | Vesta Plank in Autumn Thistle | Vesta Plank in Aged Walnut

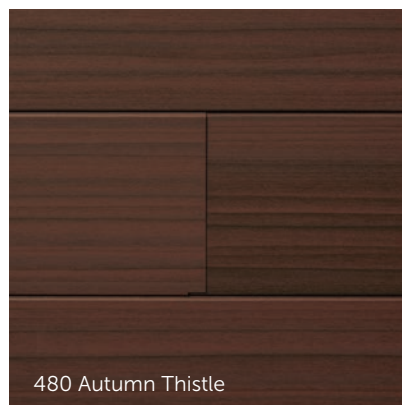


# COLOR OFFERING

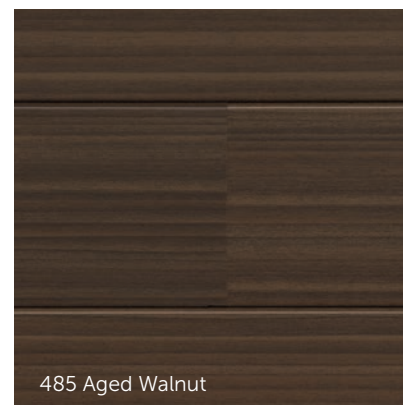
HD3 Variegated Woodgrains



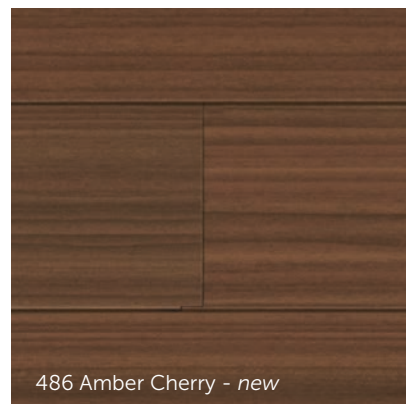
484 Dark Espresso



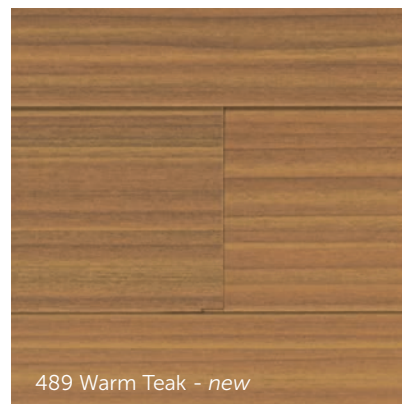
480 Autumn Thistle



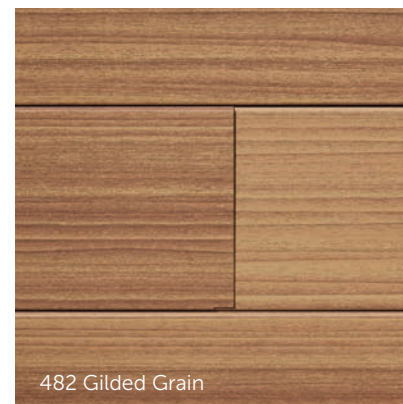
485 Aged Walnut



486 Amber Cherry - *new*



489 Warm Teak - *new*



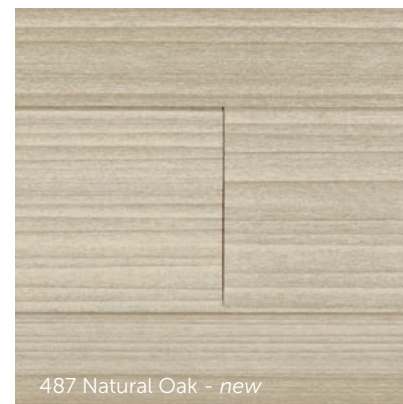
482 Gilded Grain



481 Driftwood



488 Smokey Ash - *new*



487 Natural Oak - *new*



483 Sand Dollar

Although we make every effort to ensure color accuracy in our printing process, due to printing limitations, your final products may not be an exact match to those shown.



Vesta Plank in Amber Cherry



# COLOR OFFERING

Neutral and Bold Solids



Vesta Plank in Sea Glass

414 Ironstone
462 Silver Lining
468 Fawn
469 Fresh Canvas
503 Eggshell
280 White
470 Midnight Blue
467 Evening Shade
466 Tourmaline
465 Sea Glass

Although we make every effort to ensure color accuracy in our printing process, due to printing limitations, your final products may not be an exact match to those shown.



PRODUCT DETAILS

PROFILE

- 5" Plank 8 ft Length (Woodgrain)
- 5" Plank 12 ft Length (Solid)

MATERIALS

- Steel

THICKNESS

- 0.020" (Panels)
- 0.016" (Accessories)

APPLICATION

- Horizontal
- Vertical
- Underdecking and Porch Ceiling

SOLID AND WOODGRAIN COLORS

Vesta’s color palette was designed to bring style to the exterior of a home. Each of the woodgrain colors consist of six unique grain configurations designed to resemble the natural variation of stained woods that results when several features interact, including irregular grain, rays and color deposits on the surface of wood.

COATING

- Kynar 500® (70% PVDF) – Woodgrains
- Kynar® (50% PVDF) – Solids
- CarbonTech90™ – Woodgrains & Solids

PATENTS/U.S. COPYRIGHT

U.S. Patent Nos.: 10,508,455; 10,760,282  
U.K. Patent: 2,588,713  
Canadian Patent Pending

© Sand Dollar Woodgrain Artwork VAu1-378-183  
© Driftwood Woodgrain Artwork VAu1-378-232  
© Autumn Thistle Woodgrain Artwork VAu1-378-233  
© Gilded Grain Woodgrain Artwork VAu 1-382-425

TECHNICAL DATA

Vesta steel siding utilizes one of the strongest, most versatile, and recyclable materials on our planet, reducing your carbon footprint and safeguarding against costly repairs.

BUILDING CODE RATINGS

R703.3 Wall Covering Nominal Thickness and attachments.  
Source: IRC 2018

With low energy use and zero off-gassing or maintenance concerns, Vesta is an environmentally friendly siding solution.

MATERIAL/PAINT & COATINGS DATA

- 100% Recyclable
- VOC-free coatings
- Lead free finishes

With Vesta’s rigorous testing, you can feel safe and at ease, knowing the home is protected.

FLAME SPREAD AND SMOKE DEVELOPED RATINGS

- ASTM E84-18b
- Class A Rating

STRUCTURAL PERFORMANCE RATING

- ASTM E1592-05

IMPACT RESISTANCE RATING

- UL2218 Class 4 Rating

Quality Edge is committed to leading the industry in terms of innovation and airflow. Vesta panels have unique, built-in breathing ducts that promote air circulation between joint seams and behind the building surface.

INSTALLATION

Planks must be installed on a minimum ½" O.S.B. or plywood solid flat wall over house wrap. Fasten all panels loose (floating) to the wall using 1½" nails or screws, inserting fasteners into the holes along the top of the panel 16" on center. Ensure each panel is fully engaged to the one below via the pre-rolled feature at the bottom of the panel before fastening it.

WARRANTY

Our Lifetime Limited Warranty includes protection against peeling, flaking, chipping, cracking, color fade, chalking, rust, hail, and abrasion. Vesta’s steel core is unlike any other and designed to defend against whatever nature throws at it. An anti-corrosive zinc barrier provides unyielding protection born to last generations.

AVAILABILITY & COST

Our products are available locally through Quality Edge distributors. Our distributors can provide current pricing. Contact us to put you in touch with a local Quality Edge representative in your area who can provide you distributor information.

MAINTENANCE

Remove any and all debris that may accumulate on the wall during its lifespan to keep it moisture free. Tighten any loose fasteners or trim pieces as access allows. Do not attempt to repair or replace any parts of the system without consulting a certified applicator. Repainting the wall should not be necessary through the duration of the warranty.

TECHNICAL SUPPORT

Complete technical information and literature is available at:  
[www.QualityEdge.com/Resources](http://www.QualityEdge.com/Resources)



Vesta Plank in Fresh Canvas

Quality Edge reserves the right to alter specifications without general notice or obligation to make similar changes in products previously manufactured.

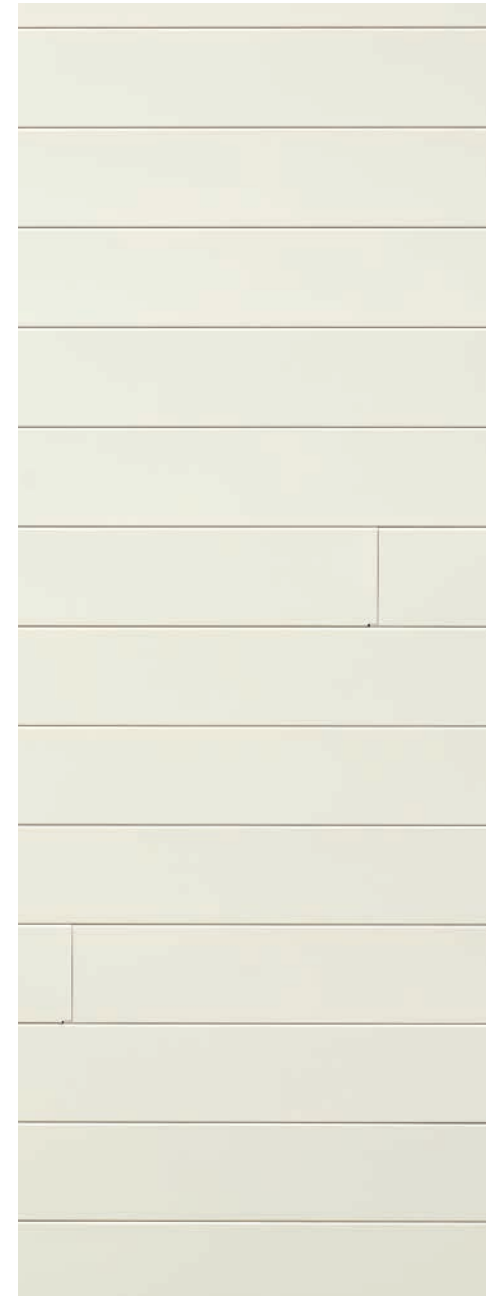




888.784.0878

QualityEdge.com

550 3 Mile Rd. NW  
Suite E  
Walker, MI 49544



VPPHOTOBOOK\_0525