



Gutter Gekko®

Authorized Dealer

Gutter Gekko®

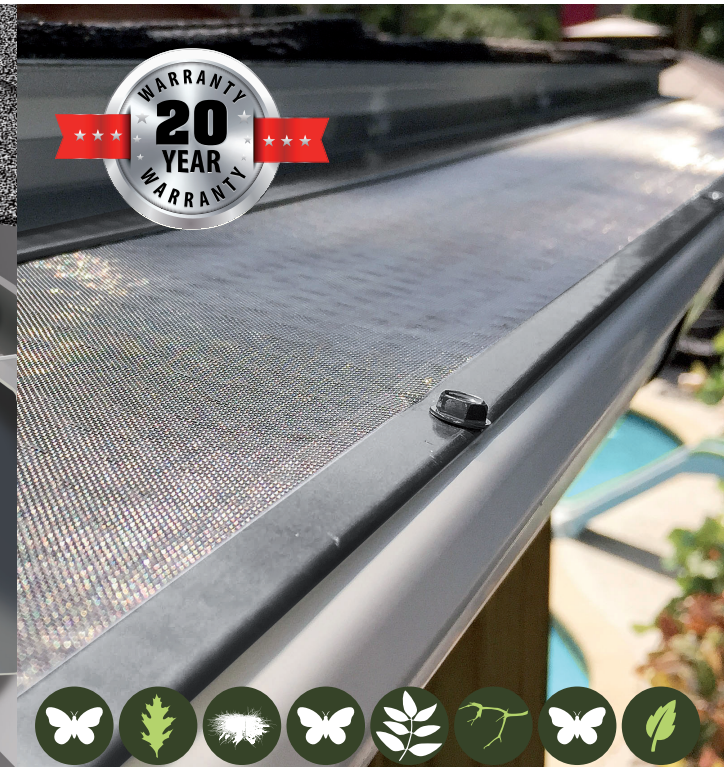
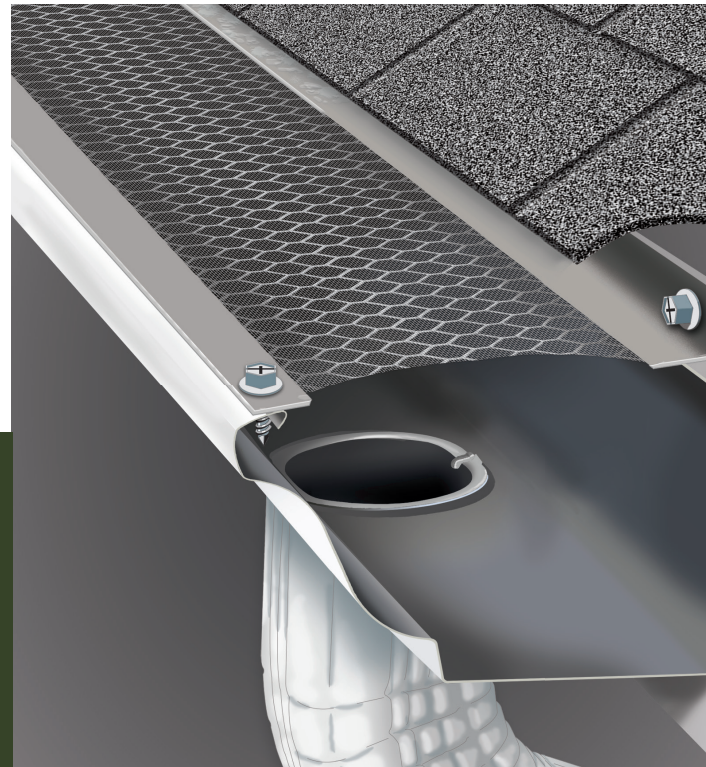
Professional Grade Gutter Protection

? Why Gekko?

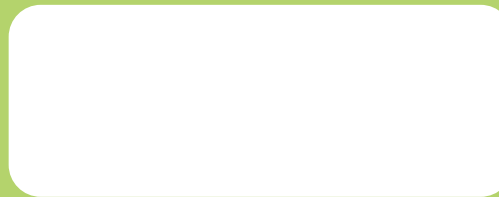
- Stainless steel mesh (surgical grade)
- Strong 0.024" thick aluminum
- Available in 5" or 6" widths
- 42 mesh
- 440 micron opening
- Handles 60 gallons of water per minute per linear foot

Our guards are made out of surgical-grade stainless steel micro-mesh, that alleviates the need for continuous gutter cleaning. This micro mesh fits on all types of roofs and interlocks panels to keep seams from unravelling, all while taking up to 60 gallons of water per minute in a given rain storm. It also creates a defensive barricade that keeps out all sorts of miniscule debris, leaves, animal nests, pine needles, and grit.

We use a patented hemmed mesh process, making sure the body of the gutter guard automatically links securely into the micro mesh. This produces a connection so strong that it will not break apart due to weather, debris, or just plain old wear and tear. Because of this smooth surface, the dust and debris merely blows off with the wind.



GEKKOTF0221



CONTACT US TODAY!

guttergekko.com



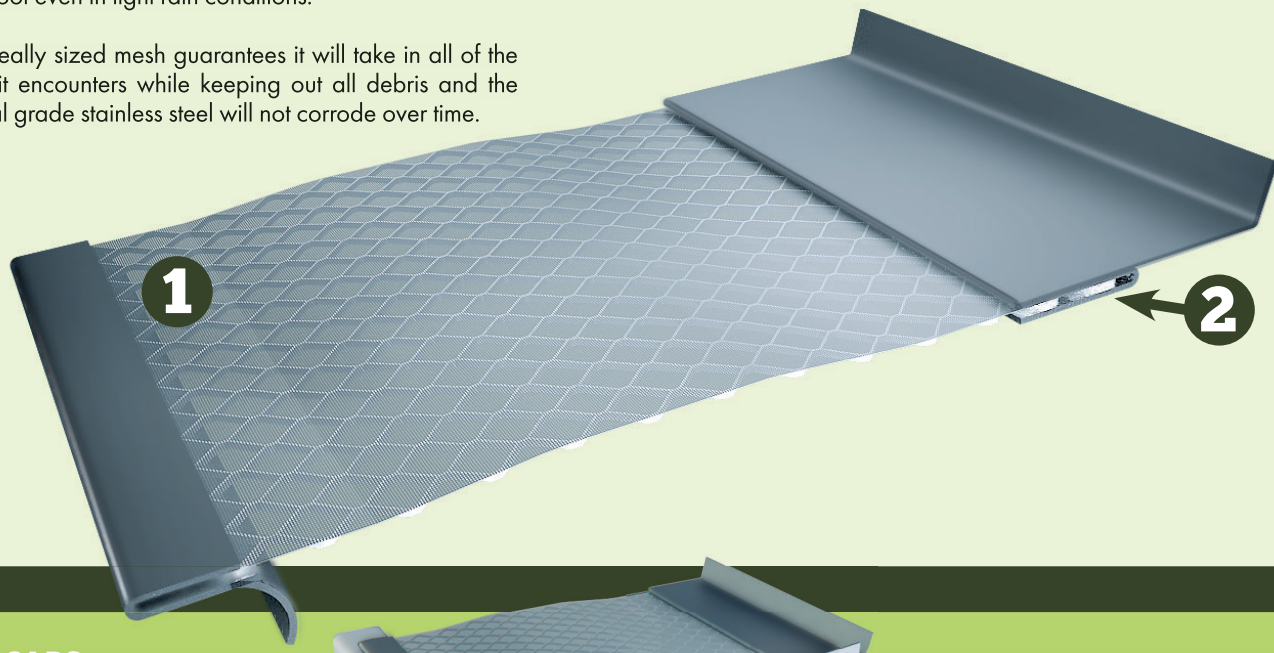


1 SURGICAL GRADE STAINLESS STEEL MICRO-MESH

After testing mesh sizes for a decade, we selected a surgical grade stainless steel micro-mesh with openings that are optimally sized to prevent even small debris from entering your gutter system while handling an amazing 60 gallons of water per minute. Never again will leaves, twigs, pine needles, oak tassels, shingle grit or other small debris clog your gutters.

Some competitive products use a mesh with larger openings which will allow pine needles and shingle granules to enter the gutters while other competitors use a mesh woven so tight that water cannot pass through fast enough, causing overshoot even in light rain conditions.

Our ideally sized mesh guarantees it will take in all of the water it encounters while keeping out all debris and the surgical grade stainless steel will not corrode over time.



2 PATENTED HEMMED MESH

Our patented "hemming" process mechanically bonds the micro-mesh securely into an aluminum body. This creates a strong connection that will not come apart after years of weathering and debris will simply blow off of this smooth surface. Be careful of mesh gutter guards that glue, caulk, or crimp the mesh into the guard body because these methods have proven to fail and pull away over time when exposed to outdoor conditions. Once the mesh pulls away, debris will enter the gutters.



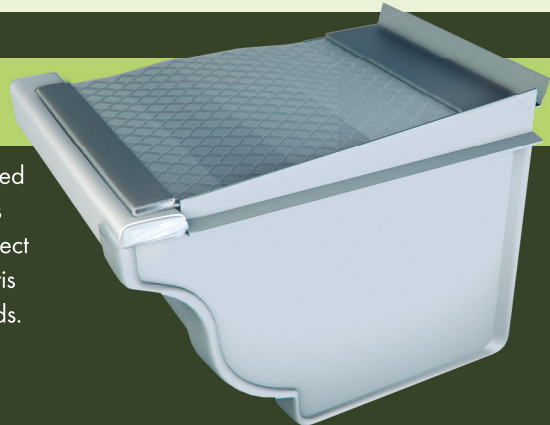
INSIDE MITERS:

High volumes of water can overwhelm gutters in certain spots such as inside roof valleys. An inside roof valley is the point where two rooflines meet forming a 90° angle. This creates an inside corner with more water flow than any other area of the home and this increased volume always overshoots the gutter.

Our solution to this problem area is our patented, stainless steel Inside Miter.

END CAPS

Make sure that your gutters are protected all the way to the end points. End Caps are carefully crafted to completely protect your gutters from small animals or debris that enter through open gaps at the ends.



SCREWS

Our Fascia and Lip screws, paired with our installation design, give your gutters box-like strength- affording unprecedented durability and stabilizing the entire system.

